

How To...

[%ođ'œ"x,ì•ïX](#)

[fJ\[f\<,ìF,ì•ïX](#)

[•\Ž|^Ê'u'²@](#)

[fŠftfœfbfVf...fœ\[fq,ì•ïX](#)

[fKf"f}“Á<,ì•ïX](#)

[-³⁄₄,é,³,ì•ïX](#)

[fRf“fgf%ofXfg,ì•ïX](#)

Total3D™ On-Line Manual

TOTAL



Total3D™ Vérité™ Graphics Accelerator Card,É,Â,ç,Ä

fnfCfXfLfff“3DfS□[fOf<,iŽg,ç•û

3D Stereo Sound ,iŽg,ç•û

fgf%°fuf<fVf...□[fefBf“fO

•â'«

Total3D™ Vérité™ Graphics Accelerator Card,É,Â,ç,Ä

Total3D,Ö,æ,æ,±,»|

^ê"É,iffBfXfvfCfCfAf_fvf^,ÍRf"fsf...[f^["à•",)fffWf^f<M|t,ðf,fff^["É•\Z|,·,é,¾,¯,Ä,·,ªA,±,ì Total3D ,í,»,ê,É%°Ä,ì,Ä%°º,É, ,°,é,æ,æ,É½,,ì"Á•É,È<@"\,ð"ð,ì,Ä,ç,Ü,·|B

Total3D ,iffBfXfvfCfC,ÉŠÖ,·,é<@"\,ðCPU,É'ä,í,Ä,Ä^ø,«Žó,¯,Ü,·|,»,)•ª-{ì,ìpf|[[,ðfvf|fOf %°f€,âfQ|[f€,É"-,Ä,é,±,Æ,ª,Ä,«,Ü,·|B
2D•\Z|,âpf|[[fAfbfv,µ,Ü,·|,¯ŽèŽ|,ì,ìpf\frf",ì%ð'œ"x,âfF|"AfŠftfCfbfvf...
fC|[fg,âftfC|[f€fC|[fg,ðfCfxf<fAfbfv,·,é,±,Æ,ª,Ä,«,Ü,·|B
,à,ì,è,ñ3Dfvf|fOf%°f€,âfQ|[f€,àŠy,µ,ß,Ü,·|, ,É,½,ìpf\frf",Ä3D,ìftfC|[f€
,âfefNfXf`ff|[,ðŽACE»,µA|Ä|V,ìfQ|[f€,É,à'ì%ž,µ,Ä,ç,Ü,·|B

Total3D,ì|Ý'è

Total3D,ðfCf"fxfg|[f<,µ|Ý'è,ðs,ì,ì|ACEä,ìfOf%°ftfBfbfNfAfNfZf%°fC|[f^<@"\,ªŽ©"®"ì,É",,æ,æ,É,È,è,Ü,·|B,³,ç,É,¯D,Y,É|±,í,¹,Ä|A,ç,,Ä,©,ì|Ý'è,ð,·,é,±,Æ,ª,Ä,«,Ü,·|B

%°ð'œ"x,Æ|F|",ì•ì|X
fŠftfCfbfvf...fC|[fg,ì•ì|X
Gamma"Ä|«,ì•ì|X
-¾,é,³,ì'²|®
fRf"fgf%°fXfg,ì'²|®
•\Z|^É'u,ì'²|®
f|[f|f<,ì|F,ì•ì|X

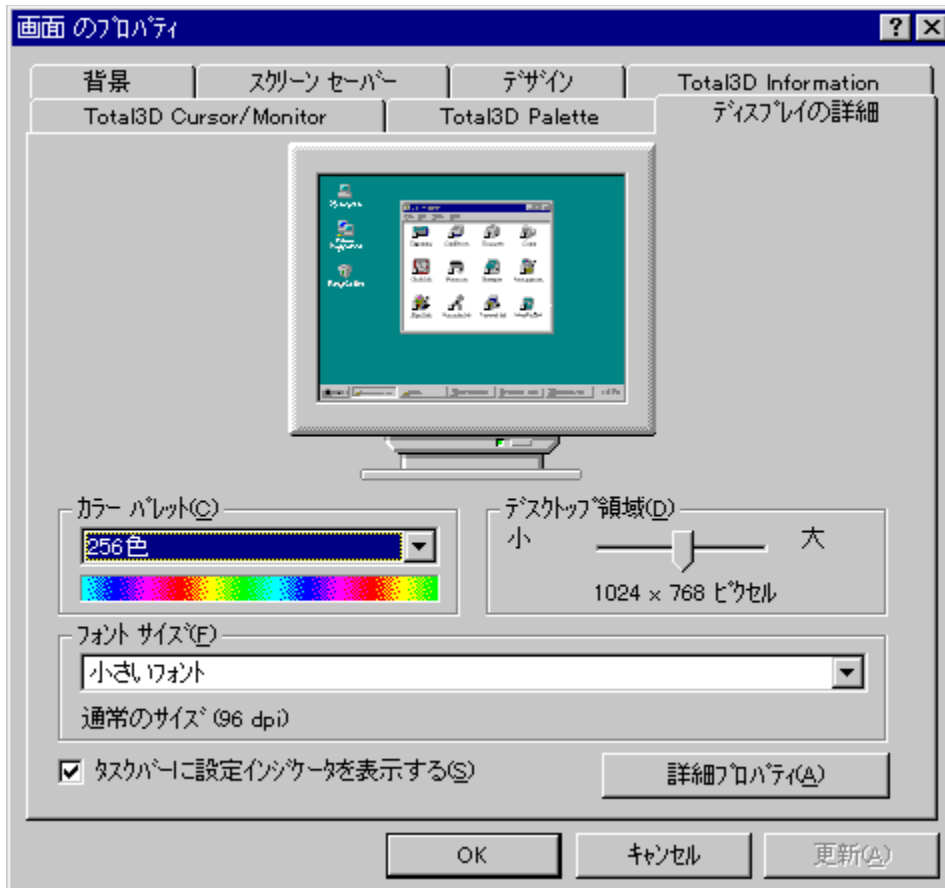
fgf%°fuf<fvf...|[fefBf"fo

-â'è,ª<N,«,½,Æ,«,É,ì|A,Ü,,±,ìf}ffj...fAf<,ìfgf%°fuf<fvf...|[fefBf"fo ,ðŽQ|Æ,µ,Ä,,¾,³,ç|B,»,±,Ä%ðCE^,Ä,«,É,ç|è|±,É,ìfefNfjff<fTf|[fg,É~A—|µ,Ä,,¾,³,ç|BfefNfjff<fTf|[fg,ì~A—|æ,ìf}ffj... fAf<,ì|ÄCEä,ìfy|[fW,ð,²—,,¾,³,ç|B

•â'«

Total3D,ìŽd—ì,ÉŠÖ,·,é,±,Æ,É,Ä,ç,Ä,ì|A,±,ìf}ffj...fAf<,ì•â'«,ì|€,ð,²—,,¾,³,ç|B

画面のプロパティ



画面のプロパティ

1. fRf“fgf□□[f<fpflf<,ì□g%œ-Ê□h,ðfNfŠfbfN,μ,Û,·□B
2. □gffBfXfvfCfC,ì□U□×□h,ì□gffXfNfgbfv-î^æ□h,ìfXf%ofCfhfo□□[.ð^Ú“@,μ,Ä,,¾,¾,ç□B
-, ,é,ç,í-

1. f^fXfNfo□□[.ìTotal3D fRf“fgf□□[f<fAfCfRf“,ðfNfŠfbfN,μ,Û,·□B
2. Žw’è,μ,½,ç%œ“x,Æ□F□”,ðfNfŠfbfN,μ,Û,·□B

画面のプロパティ

1. fRf“fgf□□[f<fpflf<,ì□g%œ-Ê□h,ðfNfŠfbfN,μ,Û,·□B
2. □gffBfXfvfCfC,ì□U□×□h,ì□gff%□□[fpfCfbfgh,Å□D,Ý,ì□F□”,ðŽw’è,μ,Ä,,¾,¾,ç□B
-, ,é,ç,í-

1. f^fXfNfo□□[.ìTotal3D fRf“fgf□□[f<fAfCfRf“,ðfNfŠfbfN,μ,Û,·□B
2. Žw’è,μ,½,ç%œ“x,Æ□F□”,ðfNfŠfbfN,μ,Û,·□B

画面のプロパティ



画面のプロパティ

Total3Dの画面プロパティ

画面のプロパティ

1. Total3D Cursor/Monitor
2. Total3D Palette
3. Total3D Information
4. Total3D Information
5. OK

Windows95 Plus! の画面プロパティ

• \\Zi^E'u,i'^2□®



• \\Zi^E'u,i'^2□®,É,Ä,ç,Ä

Total3DfOf%oftfBfbfNfc□[f<,ðŽg,Á,Ä□Af,fjf^□□ã,É•\\Zi,³,é,é%œ-É,É^E'u'^2□®,ð□s,±,Æ,ª,Ä,«,Ü,□B

• \\Zi^E'u,i'^2□®□F

1. fRf''fgf□□[f<fpflf<,ì□g%œ-É□h,ðfNfŠfbfN,μ,Ü,□B
2. □gTotal3D Cursor/Monitor□hf^fu,ðfNfŠfbfN,μ,Ü,□B
3. •\\Zi^E'u'^2□®f{fbfNfX,ì-î^ó,ðfNfŠfbfN,·,é,±,Æ,É,æ,Á,Ä□ã%œ□□¶%œE,É%œæ-É,ª^U''@,μ,Ü,□B^ê%œñfNfŠfbfN,·,é,Æ,»,)•ùCEü,É□''fsfNfZf<^U''@,μ,Ü,□B
4. CE³,ì^E'u,É-ß,μ,½,ç,Æ,«,É,í□A't□S,ìŽİšp,ìf{f^f'',ðfNfŠfbfN,μ,Ä,,³/4,³,ç□B
5. OK ,ðfNfŠfbfN,μ,Ü,□B

画面のプロパティ



画面のプロパティ

Total3Dの画面プロパティは、マウスでカーソルを移動させ、マウスボタンを押すことで、画面の背景、スクリーンセーバー、デザイン、Total3D Information、Total3D Cursor/Monitor、Total3D Palette、ディスプレイの詳細を設定することができます。

画面のプロパティの「デザイン」タブには、「Total3D Palette」と「ディスプレイの詳細」があります。

「Total3D Palette」には、「カーソルの色設定」と「表示位置・周波数調整」があります。

「カーソルの色設定」には、「内部」と「外枠」の2つのグループがあり、それぞれ赤、緑、青の3色を設定できます。

「表示位置・周波数調整」には、カーソルの位置を調整するための4方向の矢印と、リフレッシュレート(Hz)を設定するためのプルダウンメニューがあります。

画面のプロパティの「デザイン」タブには、「OK」、「キャンセル」、「更新」の3つのボタンがあります。

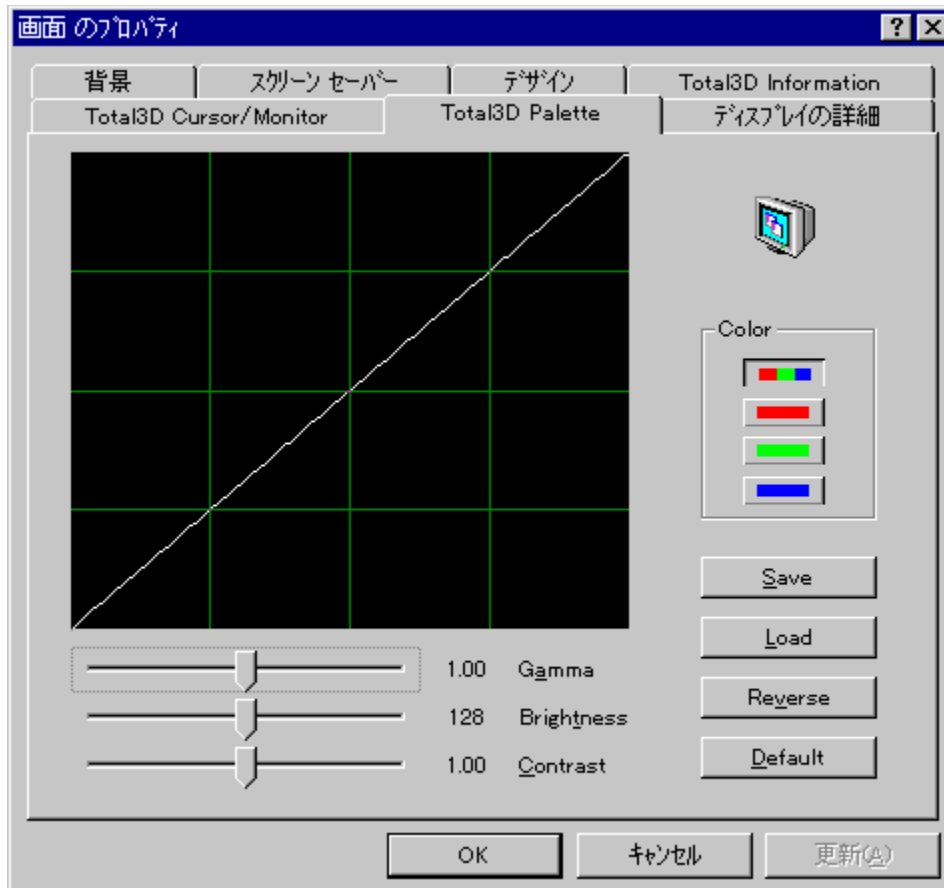
画面のプロパティ

- 画面のプロパティを開く。
- 「デザイン」タブを選択する。
- 「Total3D Palette」を選択する。
- 「カーソルの色設定」を選択する。
- 「内部」または「外枠」のグループを選択し、色を設定する。

画面のプロパティ

- 画面のプロパティを開く。
- 「ディスプレイの詳細」を選択し、リフレッシュレート(Hz)を設定する。

-¾,é,³,ì²□®



-¾,é,³,ì²□X,É,Ä,ç,Ä

Total3D of %ftfBfbfNfc□[f<,Ä-¾,é,³,ì²□®,ª%Ä"\,Ä,·□B

-¾,é,³,ì²□®□F

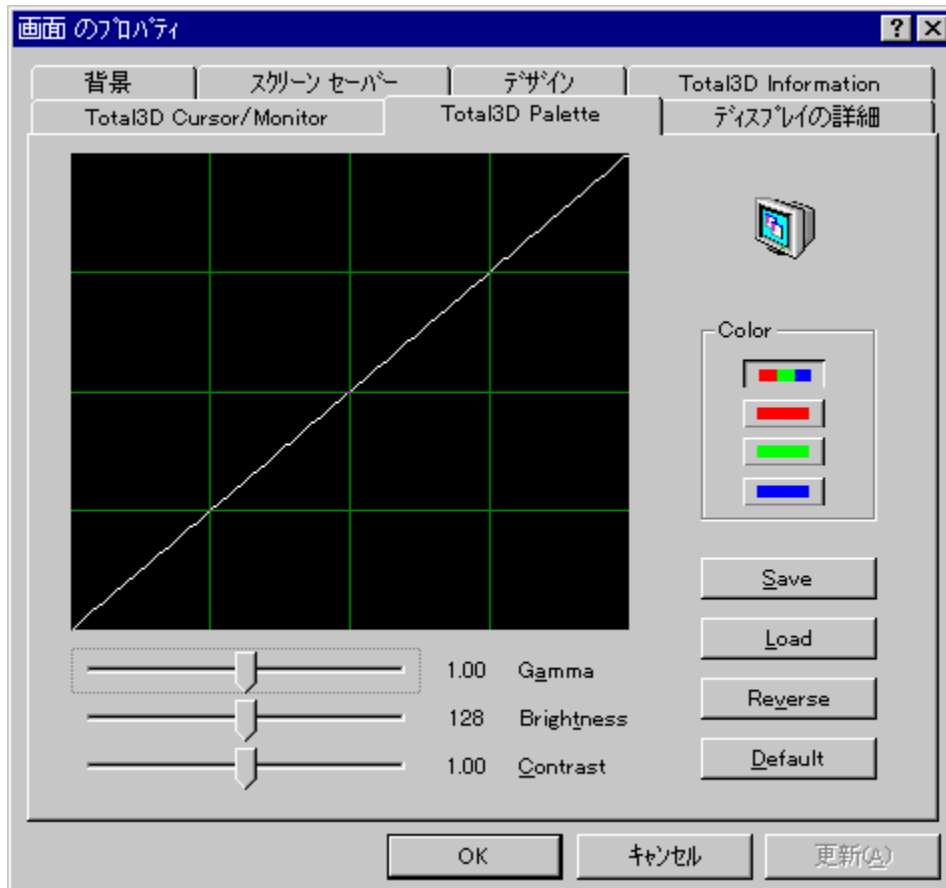
1. fRf"fgf□□[f<fpflf<,ì□g%œ-Ê□h,ðfNfŠfbfN,μ,Û,·□B
2. □gTotal3D Palette□hf^fu,ðfNfŠfbfN,μ,Û,·□B
3. %œE'α,É, ,éjff%□[f{fbfNfX,Ä□gRGB(3□F□□hf{f^f",ðfNfŠfbfN,·,é,©□AAlt-wfL□[,ð%ÿ,μ,Û,·□B
4. □^,ñ't,ìBrightnessfXfNf□□[f<fo□[,ð□¶%œE,ÉfXf%ofCfh,μ,Ä□A'²□®,μ,Û,·□B
5. ,Û,½Alt-tfL□[,ð%ÿ,μ,Ä□Afj□□[f<^Ú" @fL□[,Ä□¶%œE,Éfo□[,ðfXf%ofCfh,·,é,±,Æ,ª,Ä,«,Û,·□B
6. □Y'è"à—e,ð•Û'¶,μ,½,ç,Æ,«,í□ASave,ðfNfŠfbfN,μ,Ä□A□Y'èftf@fCf<,É-¼'O,ð,Ä,~,Ä•Û'¶,μ,Ä,-¾,³,ç□B
7. •Û'¶,μ,Ä, ,é□Y'è,ðŽg—p,μ,½,ç,Æ,«,í□ALoad,ðfNfŠfbfN,μ,Ä□A□Y'èftf@fCf<,ðœÄ,Ñ□o,μ,Ä,-¾,³,ç□B
8. •W□É,ì□Y'è,É-β,μ,½,ç,Æ,«,É,í□ADefault,ðfNfŠfbfN,μ,Ä,¾,³,ç□B
9. OK ,ðfNfŠfbfN,μ,Û,·□B

□ÔA—ì□AÄF,ì-¾,é,³,ðœÄ•Ê,É□Y'è,Ä,«,Û,·□F

1. fRf"fgf□□[f<fpflf<,ì□g%œ-Ê□h,ðfNfŠfbfN,μ,Û,·□B

2. **gTotal3D Palette** hf^fu, ðfNfŠfbfN, μ, Ü, ·B
3. %E'α, É, , éjff%o[f{fbfNfX, ÅgO h g—Îh g g Å hf{f^f", ðfNfŠfbfN, ·, é, ©AALT-r, ALT-g, ALT-bfL[. ð%oÿ, μ, Ü, ·B
4. ^, ñ'†, iBrightnessfXfNf[f<fo[. ð%oE, ÉfXf%ofCfh, μ, ÄA'²@, μ, Ü, ·B
5. , Ü, ½Alt-tfL[. ð%oÿ, μ, ÄAfj[f^f^" @fL[. Å%oE, Éfo[. ðfXf%ofCfh, ·, é, ±, Æ, Å, «, Ü, ·B
6. Ý'è" à—e, ð•Ü'¶, μ, ½, ç, Æ, «, ÍASave, ðfNfŠfbfN, μ, ÄAÝ'èftj@fCf<, É-¼'O, ð, Ä, ¯, Ä•Ü'¶, μ, Ä, -, ¾, ³, çB
7. •Ü'¶, μ, Ä, , éÝ'è, ðŽg—p, μ, ½, ç, Æ, «, ÍALoad, ðfNfŠfbfN, μ, ÄAÝ'èftj@fCf<, ðCEÄ, Ño, μ, Ä, -, ¾, ³, çB
8. •W€ , ÍÝ'è, É-β, μ, ½, ç, Æ, «, ÍADefault, ðfNfŠfbfN, μ, Ä, , ¾, ³, çB
9. **OK** , ðfNfŠfbfN, μ, Ü, ·B

Gamma “Á«,ì•ïX



Gamma “Á«,ì•ïX,É,Ä,ç,Ä

Total3Dのf%oftfBfbfNfc[f<,ÁGamma “Á«,ì’²@,ª%oÄ”,Ä,・B

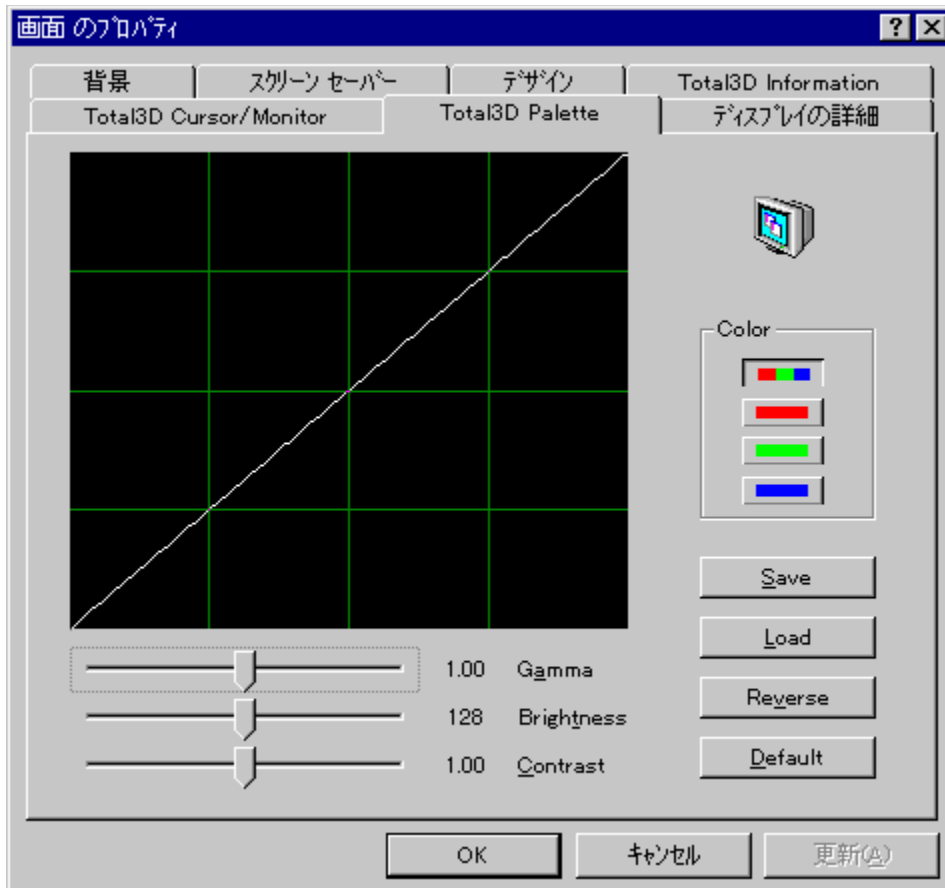
Gamma “Á«,ì’²@:

1. fRf“fgf[f<fpflf<,ìg%œ-Êh,ðfNfŠfbfN,μ,Û,・B
2. gTotal3D Palettehf^fu,ðfNfŠfbfN,μ,Û,・B
3. %oE’x,É, ,éjff%o[f{fbfNfX,ÁgRGB(3F[]hf{f^f”,ðfNfŠfbfN,・,é,©Alt-wfL[,ð%oÿ,μ,Û,・B
4. ^è”Ôÿ,ìGammaXfNf[f<fo[,ð¶%oE,ÉfXf%oCfh,μ,ÄA’²@,μ,Û,・B
5. ,Û,½Alt-afL[,ð%oÿ,μ,ÄAfj[f<f^U”@fL[,Ä¶%oE,Éfo[,ðXf%oCfh,・,é,±,Æ,ª,Ä,«,Û,・B
6. ¶Y’è”à—e,ð•Û’¶,μ,½,ç,Æ,«,íASave,ðfNfŠfbfN,μ,ÄA¶Y’èftf@fCf<,É-¼’O,ð,Ä,~,Ä•Û’¶,μ,Ä,-¾,¾,çB
7. •Û’¶,μ,Ä, ,é¶Y’è,ðŽg—p,μ,½,ç,Æ,«,íALoad,ðfNfŠfbfN,μ,ÄA¶Y’èftf@fCf<,ðEÄ,Ño,μ,Ä,-¾,¾,çB
8. •W[€,ì¶Y’è,É-ß,μ,½,ç,Æ,«,É,íADefault,ðfNfŠfbfN,μ,Ä,¾,¾,çB
9. OK ,ðfNfŠfbfN,μ,Û,・B

ÔA—ÎAÄ,ìGamma “Á«,ðEÄ•É,ÉY’è,Ä,«,Û,・F

1. fRf“fgf□□[f<fpflf<,l□g%œ-Ê□h,ðfNfŠfbfN,μ,Û,·□B
2. □gTotal3D Palette□hf^fu,ðfNfŠfbfN,μ,Û,·□B
3. %œE’α,É, ,éjff%□[f{fbfNfX,Â□g□Ô□h□g—Í□h□g□Â□hf{f^f“,ðfNfŠfbfN,·,é,©□AALT-r, ALT-g, ALT-bfL□[,ð%ÿ,μ,Û,·□B
4. ^è”Ô□ã,lGammafXfNf□□[f<fo□[,ð□¶%œE,ÉfXf%ofCfh,μ,Ä□A’²□@,μ,Û,·□B
5. ,Û,½Alt-afL□[,ð%ÿ,μ,Ä□AfJ□[f<^Ú“@fL□[,Ä□¶%œE,Éfo□[,ðfXf%ofCfh,·,é,±,Æ,³,Ä,«,Û,·□B
6. □Y’è“à—e,ð•Û’¶,μ,½,ç,Æ,«,Í□ASave,ðfNfŠfbfN,μ,Ä□A□Y’èftj@fCf<,É-¼’O,ð,Ä,¯,Ä•Û’¶,μ,Ä,-,¾,³,ç□B
7. •Û’¶,μ,Ä, ,é□Y’è,ðŽg—p,μ,½,ç,Æ,«,Í□ALoad,ðfNfŠfbfN,μ,Ä□A□Y’èftj@fCf<,ðÆÄ,Ñ□o,μ,Ä,-,¾,³,ç□B
8. •W□€,Í□Y’è,É-β,μ,½,ç,Æ,«,É,Í□ADefault,ðfNfŠfbfN,μ,Ä,,¾,³,ç□B
9. OK ,ðfNfŠfbfN,μ,Û,·□B

fRf“fgf%ofXfg,ì'²□®



fRf“fgf%ofXfg,ì•ï□X,É,Ä,ç,Ä

Total3D of f%oftfBfbfNfc□[f<,ÄfRf“fgf%ofXfg,ì'²□®,ª%oÄ“\,Ä,·□B

fRf“fgf%ofXfg,ì'²□®□F

1. fRf“fgf□□[f<fpflf<,ì□g%oæ-Ê□h,ðfNfŠfbfN,μ,Û,·□B
2. □gTotal3D Palette□hf^fu,ðfNfŠfbfN,μ,Û,·□B
3. %oE'ª,É, ,éjff%o□[f{fbfNfX,Ä□gRGB(3□F□□hf{f^f“ ,ðfNfŠfbfN, ,é,©□AAlt-wfL□[,ð%oÿ,μ,Û,·□B
4. ^è”Ô%oº,ìContrastfXfNf□□[f<fo□[,ð□¶%oE,ÉfXf%ofCfh,μ,Ä□A'²□®,μ,Û,·□B
5. ,Û,½Alt-cfL□[,ð%oÿ,μ,Ä□Afj□[f^f^Ú“ @fL□[,Ä□¶%oE,Éfo□[,ðfXf%ofCfh, ,é,±,Æ,ª,Ä,« ,Û,·□B
6. □Y'è“à—e,ð•Û'¶,μ,½,ç ,Æ,« ,í□ASave,ðfNfŠfbfN,μ,Ä□A□Y'èftj@fCf<,É-¼'O,ð,Ä,~,Ä•Û'¶,μ,Ä,-¾,¾,ç□B
7. •Û'¶,μ,Ä, ,é□Y'è,ðŽg—p,μ,½,ç ,Æ,« ,í□ALoad,ðfNfŠfbfN,μ,Ä□A□Y'èftj@fCf<,ðCEÄ,Ñ□o,μ,Ä,-¾,¾,ç□B
8. •W□É,ì□Y'è,É-β,μ,½,ç ,Æ,« ,É,í□ADefault,ðfNfŠfbfN,μ,Ä,¾,¾,ç□B
9. OK ,ðfNfŠfbfN,μ,Û,·□B

□Ô□A—î□AÄ□F,ìfRf“fgf%ofXfg,ðCEÄ•É,É□Y'è,Ä,« ,Û,·□F

1. fRf“fgf□□[f<fpflf<,ì□g%oæ-Ê□h,ðfNfŠfbfN,μ,Û,·□B

2. **gTotal3D Palette** hf^fu, ðfNfŠfbfN, μ, Ü, ·B
3. %E'α, É, , éjff%o[f{fbfNfX, ÅgÖh—ÎhggÂhf{f^f“, ðfNfŠfbfN, ·, é, ©AALT-r, **ALT-g**, **ALT-bfL**[, ð%oÿ, μ, Ü, ·B
4. ^è”Ö%oº, ì**Contrast**fXfNf[f<fo[, ð%1%oE, ÉfXf%ofCfh, μ, ÄA'²@ , μ, Ü, ·B
5. , Ü, ½**Alt-cfL**[, ð%oÿ, μ, ÄAfj[f^f<^Ú“ @fL[, Ä%1%oE, Éfo[, ðfXf%ofCfh, ·, é, ±, Æ, ³, Ä, «, Ü, ·B
6. ÿ'è“à—e, ð•Û'¶, μ, ½, ç, Æ, «, í**ASave**, ðfNfŠfbfN, μ, ÄAÿ'èftj@fCf<, É-¼'O, ð, Ä, ¯, Ä•Û'¶, μ, Ä, -, ¾, ³, çB
7. •Û'¶, μ, Ä, , éÿ'è, ðŽg—p, μ, ½, ç, Æ, «, í**ALoad**, ðfNfŠfbfN, μ, ÄAÿ'èftj@fCf<, ðCEÄ, Ño, μ, Ä, -, ¾, ³, çB
8. •W€ , ìÿ'è, É-β, μ, ½, ç, Æ, «, É, í**ADefault**, ðfNfŠfbfN, μ, Ä, , ¾, ³, çB
9. **OK** , ðfNfŠfbfN, μ, Ü, ·B

fgf%ofuf<fVf... [fefBf“fo

^È%º, ðfgf%ofuf<, º<N, ±, Á, ½ê±, ðí^ -@, ðà-¾, µ, Ä, ç, Ü, ·B

fVfXfef€fNf%ofbfVf...

Windows 95f, [fh, Å, ðs<ï±

3D'í%ºž, ð DOS fQ [f€, Å, ðs<ï±

3D'í%ºž, ð Windows 95 (Direct3D) fQ [f€, Å, ðs<ï±

fnfCfXfLfff“3DfS [fOf<, Å, ðs<ï±

3DfTfEf“fh, ðs<ï±

, Ç, µ, µ, Ä, à'í%ºž, º, Å, «, È, çfgf%ofuf<, º, ¶, ¶, ½Žž, íAjjfm [fvfX, ðfefNfjjf<fTf [fg, É, “-â, ç±, í, -
, ¾, ¾, çBfefNfjjf<fTf [fg, ðA—±æ, ð}jjf...fAf<, ðÅCEä, ðfy [fW, ð, ²—, , ¾, ¾, çB

fVfXfef€fNf%fbfVf...

'Êí,ìê†,Á,lfNf%fbfVf...

Q1. "É'RfVfXfef€,afNf%fbfVf..., ,éB

A1. Total 3D, ívf%ofo•fvf€fC,É'í%ož,µ,Ä,ç,Ü,·B Šg'£<@Ší,afvf%ofo•fvf€fC,É'í%ož,µ,Ä,ç,É,ç,ê††AIRQ,È,Ç,lfŠf[]fX,dfVfXfef€BIOSfZfbfgfAfbfv,ÅSm•Ü,µ,Ä,·,ç,ÄAfuf[]fgŽž,Éf\ftfgfEjFfAfhf%ofCfo,É,æ,Á,ÅSm•Ü,³,è,éTfEf"fhfj[]fh,È,Ç,lfŠf[]fX,Æ[]d,È,ç,É,ç,æ,µ,É,·,é•K—v,ª,è,Ü,·B
 fVfXfef€,ì BIOSfZfbfgfAfbfv,ð<N"® ,µAfvf
 %ofo•fvf€fC,lfRf"ftfBfO,df'fFfbfN,µ,ÅŠg'£fj[]fh,ì,½,ß,lfŠf[]fX,ªSm•Ü,³,è,Ä,ç,é,©,Ç,µ,©,ðSm" F,µ,Ä,¾,¾,ç[]B,Ü,½,±,è,É,Ä,ç,Ä,lfVfXfef€,lf}fjf...fAf<,à•K, ŽQ[]Æ,µ,Ä,,¾,¾,ç[]B

,» ,é,Á,à-â'è,ª,%oðCE^ ,µ,É,çê††:
 fRf"fgf[]f<f<fpf|f<,ìgfvfXfef€h"à,É ,éfffofCfXf}f[]fWff,df'fFfbfN,µ,Ä,-
 ,¾,¾,ç[]B,à,µ,Ç,è,©,lfffofCfX,É%o©[]F,çŠÜ,É[]•,ì[]f}[]fN,ª,Ä,ç,Ä,ç
 ,½,ç[]AfEfBf"fhfEfY,lfwf<fv,É,µ,½,ª,Ä,Äf}[]fN,ðŽæ,è[]œ,ç,Ä,,¾,¾,ç[]B,±,ì-â'è,É,í'½,-
 ,ìê††fffofCfX,ì£ê††,©ŠÖEW,µ,Ä,ç,Ü,·,ì,ÄAfEfBf"fhfEfY,lfgf%ofuf<fvf...
 []fefBf"fo,É,µ,½,ª,Ä,Ä£ê††,ð%oñ"ð,·,é,±,Æ,É,æ,Á,Ä%oðCE^ ,·,é,±,Æ,ª,Ä,« ,Ü,¹,ñ[]B

Windows 95,ì"® []'t,ÉfNf%fbfVf...,ª<N,±,Á,½[]ê††

Q2. fCf"FXfg[]f<'t,ÉfVfXfef€,afNf%fbfVf..., ,éB

A2. fVfXfef€,É,æ,Á,Ä,íACE³,©,ç, ,éVGA,lfhf
 %ofCfoftf@fCf<[]gVGA.DRV[]h,ªAfCf"FXfg[]f<Žž,ÉfVfXfef€,dfNf%fbfVf...
 ,¾,¾,è[]Af[]fbfNfAfbfv,ð<N,±,µ,½,è,·,é,±,Æ,ª, ,è,Ü,·B,» ,ì,æ,µ,É[]ê††[]A^È
 %oº,ìžè[]†,É,µ,½,ª,Ä,Ä[]gVGA.DRV[]h,ð"ü,è'Ö,ì,Ä,,¾,¾,ç[]B[]iVGA.DRVftf@fCf<,lfVfXfef€,Åžg—
 p,³,è,Ä,ç,Ü,·,ì,Ä[]A,±,ìžè[]†,í'Êí Windows95 []ä,Ä[]s,µ,±,Æ,í,Ä,« ,Ü,¹,ñ[]B

1. fVfXfef€,ðgRf}f"fhfvf[]f"fvfg[]hf,[]fh,Á,½,ž, ,° ,éB[]i "dCE¹,ð"ü,è,Ä[]gStarting Windows 95h,lf[]fbfZ[]fW,ª\Zì,³,è,½,ç[]A[]gF8[]hfL[][,ð%oÝ,µ,Ä,,¾,¾,ç[]B[]fjf...[][,ª\Zì,³,è,Ü,·,ì,Ä[]A[]gCommand prompt only[]h,ð'l,ñ,ÄENTER,ð%oÝ,µ,Ä,,¾,¾,ç[]B[]B
2. fhf%ofCfo[]f[]ffBfXfN[]gDISK1[]h,©,ç[]gVGA.DRV[]hftf@fCf<,dfRfs[][,µ,Ä[]AWindows95 ,ì SYSTEMftfHf<f_ÉfRfs[][,µ,Ü,·B —á,ì,í[]A

copy a:vga.driv c:\windows\system /y

,Æ,È,è,Ü,·B

3. fVfXfef€,ð[]Ä<N"® ,µ,Ü,·B

'[]: ,±,è,Á,à-â'è,ª, ,é[]ê††,í[]Afpf\frf",ð SAFEf,[]fh,Ä—š,ž[]ä,º,Ä,-
 ,¾,¾,ç[]B"dCE¹,ð"ü,è,Ä[]gStarting Windows 95h,lf[]fbfZ[]fW,ª\Zì,³,è,½,ç[]A[]gF8[]hfL[][,ð
 %oÝ,µ,Ä,,¾,¾,ç[]B[]fjf...[][,ª\Zì,³,è,Ü,·,ì,Ä[]A[]gSafe mode[]h,ð'l,ñ,ÄENTER,ð%oÝ,µ,Ä,,¾,¾,ç[]B[]B

Q3. fffXfNfgfbfv,ðVGAf,[]fh,Ä"®,©,·,Æfnf"fofAfbfv,·,éB

A3. fVfXfef€,É,æ,Á,Ä,íAfCf"FXfg[]f<Žž,àVGAf,[]fh,Äf,fff^[][,ð"®,©,µ,Ä,ç,é,Æ,« ,ÉfVfXfef€,afNf %ofbVf...,·,é,±,Æ,ª, ,è,Ü,·B,±,ìCE»[]Ü,í[]AIntel,ìPClf'fbfvfZfbfg82437FX[]@Step A-1,ðžg— p,µ,½f}fU[]f{[]fh,Ä<N,±,è,±,Æ,ª, ,è,Ü,·B,±,è,ªCE^ð,Æ[][,ì,ç,è,é[]ê††[]A^È%oº,ìžè[]†,É[] ,Ä,Ä[]gVGA.DRV[]h,ð"ü,è'Ö,ì,Ä,,¾,¾,ç[]B[]iVGA.DRVftf@fCf<,lfVfXfef€,Åžg—p,³,è,Ä,ç ,Ü,·,ì,Ä[]A,±,ìžè[]†,í'Êí Windows95 []ä,Ä[]s,µ,±,Æ,í,Ä,« ,Ü,¹,ñ[]B

1. fVfXfef€ , ð gRf}f“fhfvf[]“fvfg[]hf, []fh, Å, ½, ¿, °, é B[]i “dCE¹, ð“ü, ê, Ä gStarting Windows

95[]h, []f[]bfz[][]fW, ð·\¿, ³, ê, ½, ç[]A[]gF8[]hfL[][], ð%öÿ, µ, Å, , ¾, ³, ç[]B[]f[]ff...[][], ð·\¿, ³, ê, Ü, ·, Ì, Å[]A[]gCommand prompt only[]h, ð‘l, ñ, ÅENTER, ð%öÿ, µ, Å, , ¾, ³, ç[]B[]j

2. fhf%oofCfo[][]fffBfXfN[]gDISK[]h, ©, ç[]gVGA.DRV[]hftf[]fCf<, ðfRfs[][], µ, Å[]AWindows95 , Ì SYSTEMftfHf<_ , ÉfRfs[][], µ, Ü, ·[]B —á, Ì, Ì[]A
copy a:vga.driv c:\windows\system /y
,Æ, È, è, Ü, ·[]B
3. fVfXfef€ , ð Ä<N“ ® , µ, Ü, ·[]B

Q4. Windows95, ÅDOS‘<, ð—š, ¿[]ã, °, é, Æfnf“fOfAfbfv, ·, é[]B

A4. Windows95, ÌŽŽ, É, æ, Á, Ä[]A[]fOf%oftfBfbfNf{[][]fh—p, ÉŠm·Ü, µ, Å, , éf[]f, fŠfGfŠfA, ðf{[][]fh, Ìfhf %oofCfo, É~A—[] , ¹, , É“É‘R·ì[]X, ·, é, ±, Æ, ð, , è, Ü, ·[]B, ±, è, É, æ, Á, Ä^ê“Ô%oe<¿, ðŽó, ~, à, ·, ç , Ì, ÌVGA, Ì·“·², Å, ·, Ì, Å[]ADOSfvf[]“fvfg, àDOSfAvfš, È, Ç, ÌVGAf, []fh, Ìfvf[]fOf%oof€ , Åfnf“fOfAfbfv, ð<N, ±, è, à, ·, ç[]A, Æ, ç, x, ±, Æ, È, È, è, Ü, ·[]B , ±, Ì, è, ð±[]A%º, ÌŽè[]±, É[] , Á, Ä[]A[]f[]C[]f[]W[]f[]X[]f[]g[]f[]Š[]f[]G[]ff[]B[]f[]^[]i[]RegEdit.exe[]j, ðŽg, Á, Ä[]A[]f[]C[]f[]W[]f[]X[]f[]g[]f[]Š, ©, çff[]B[]f[]X[]f[]v[]f[]C[]f[]C[]h[]f[] %oofCfo, ð[]í[]œ, µ, Å, , ¾, ³, ç[]B

f[]C[]f[]W[]f[]X[]f[]g[]f[]Š, Ì
" HKEY_LOCAL_MACHINE/Enum/PCI"
, ðŠj, ~, Ü, ·[]B
Vérité fOf%oftfBfbfNf`fbfv, ð“<[]Ü, µ, ½f{[][]fh, ÌfGf“fgfš, Ì "VEN_1163&DEV_0001" , Æ, È, Á, Ä, ç, Ü, ·[]B, ± , è, ð[]í[]œ, µ, Å, , ¾, ³, ç[]B , Ü, ½[]A‘¼, ÌfffBfXfvf[]C[]f[]C[]ff[]of[]C[]f[]X, ÌfGf“fgfš[]@[]f[]Gf“fgfš[][], ÌVEN_???? &DEV_???? , Å‘t, ÌClassfL[][], ðgDisplay[]h, Æ, È, Á, Ä, ç, Ü, ·), à‘S, Å[]í[]œ, µ, Å, , ¾, ³, ç[]B

f[]C[]f[]W[]f[]X[]f[]g[]f[]Š[][], Ì
" HKEY_LOCAL_MACHINE/System/CurrentControlSet/Services/Class/Display"
, Ì‘t, ÌfGf“fgfš, ð‘S, Å[]í[]œ, µ, Å, , ¾, ³, ç[]B

fVfXfef€ , ð Ä<N“ ® , µ, Å[]A[]Total3DfffBfXfvf[]C[]f[]C[]hf%oofCfo, ð[]Äf[]C[]f[]X[]f[]g[]f[]f<, µ, Å, , ¾, ³, ç[]B

DOSfAvfš, ÌŽÀ[]s‘t, ÉfvfXfef€ , ðfnf%oofbfVf..., ·, é[]è[]±[]B

fVfXfef€fNf%oofbfVf..., ÌCE^‘ò, Ì‘á·“·², ÌVérité, Ìfhf%oofCfo, Æ‘¼, Ì[]»·i, Ìfhf %oofCfo, Æ, Ì[]Õ“É, É, æ, Á, Ä<N, ±, è, Ü, ·[]B ^È%º, É[]ADOSfAvfš, ÌŽÀ[]s‘t, Éfnf%oofbfVf... , ð, ~, <, ½, Æ, <, Ì‘í[]^—@, ðŠô, Å, ©ŽÌ, µ, Å, ç, Ü, ·[]B

Q5. EMM386^ÈŠO, Ìf[]f, fŠf}f[][]fWff[][], ðŽg, Á, Ä, ç, Äfnf%oofbfVf..., ð, ~, <, é[]B

A5. DOS, Ì 3D‘Í%žfQ[]f€, Ì[]AŠì—{“Ì, ÉEMM386^ÈŠO, Ìf[]f, fŠf}f[][]fWff, Å, Ì“ @[], Ì·Ü[]Ø, µ, Å, ç , Ü, ¹, ñ[]B ^ê“É, É[]A“Á·É, Éf[]f, fŠ[][]f}f[][]fWff[][], ÌfQ[]f€, ð, ·, é[]ã, Å, Ì·K—v, , è, Ü, ¹, ñ, Ì, Å[]A[]f[]f, fŠ[]f}f[][]f[] Wff[][], ðEMM386, É·ì[]X, µ, Å, , ¾, ³, ç[]B

Q6. UniVBE, à Display Doctor, Æ^è[][], É“®, ©, µ, Å, ç, Äfnf%oofbfVf..., ·, é[]B

A6. , ±, è, ç, Ìfhf%oofCfo, Ì VESA 2.X VGA/SVGA f[]C[]f“f^[]ftfF[]f[]X, ð[]A, ±, Ìf[]C[]f“f^[]ftfF[]f[]X, ð“ò, Ì, Å, ç , È, çfOf%oftfBfbfNfff[]of[]C[]f[]X, É‘ñ<ÿ, ·, é, ½, ß, Ì, à, Ì, Å, ·[]B Total3D, ÌBIOS, ÌVESAS2.X, É‘Í%ž, µ, Å, ç , é, ½, ß[]A, ±, è, ç, Ìfhf%oofCfo[][], Ì·K—v, , è, Ü, ¹, ñ[]B, ³, ç, É, ±, è, ç, Ìfff[]of[]C[]f[]X, Ì‘É[]í, Ì“ @[], ÉŠ±[]Ä, µ, Å, - , é, ½, ß[]A[]f[]V[]f[]X[]f[]e[]f[]n[]f“f[]Of[]A[]fb[]fv, ÌCE^‘ò, É, È, é, ±, Æ, ð, , è, Ü, ·[]B Total3D, ð, ²—~— p, Ì[]Ü, É, Ì[]AAUTOEXEC.BATftf[]f[]C[]f<, ©, ç, ±, è, ç, Ìfhf%oofCfo, ð[]í[]œ, µ, Å, , ¾, ³, ç[]B

Windows95f, [fh, Å, Ì • s < i] †

Q1. [, % ð ' œ " x , Ì i VGA ^ È Š O , Ì j j ' Y ' è , ð , Å , « , È , † B

A1. Windows95, Ì [% Š ú , Ì fo [fWf†f " , Å , Í A Total3D , Ì fff of CfX , ð PCI fRf " ft fBf of C E [fVf†f " , Å [³ , µ , -
" F Ž , ³ , è , È , † , ± , Æ , ð , , è , Ü , · B , » , Ì ê [† AVGAfhf % of Cfo , ð Š , , è " - , Å , ç , è , Å A fhf
% of Cfo , ð fCf " fXfg [[f < , ³ , è , ½ C ã , à VGAfhf % of Cfo , ð Ž c , Å , Å [³ , µ , † fhf % of Cfo , È Š ± [Å , · , é , ± , Æ , ð , , è , Ü , · [B
B [i , ± , è , ð C E ^ ö , Å fNf % of b fVf . . . , · , é , ± , Æ , à , , è , Ü , · [j
 , ± , Ì ê [† A % ð , Ì Ž è [† , È []
 , Å , Å A f C E fWfXfgfŠ fGfffBf ^ [i RegEdit.exe [j , ð Ž g , Å , Å A f C E fWfXfgfŠ , © , ç fffBfXfvf C E fCfhf
 % of Cfo , ð [í [œ , µ , Å , , ¾ , ³ , † B

f C E fWfXfgfŠ , Ì
" HKEY_LOCAL_MACHINE/Enum/PCI"
 , ð Š j , - , Ü , · B
Vérité fOf % of t fBf b fNf ' f b f v , ð " < [Ú , µ , ½ f { [[fh , Ì fGf " fgfŠ , Ì " VEN_1163&DEV_0001" , Æ , È , Å , Ä , † , Ü , · B , ±
 , è , ð [í [œ , µ , Å , , ¾ , ³ , † B , Ü , ½ [A ' ¼ , Ì fffBfXfvf C E fCfff of CfX , Ì fGf " fgfŠ [[(fGf " fgfŠ [[, Ì VEN_????
&DEV_???? , Å ' † , Ì ClassfL [[, ð g Display [h , Æ , È , Å , Ä , † , Ü , ·) , à ' S , Å [í [œ , µ , Å , , ¾ , ³ , † B

f C E fWfXfgfŠ [[, Ì
" HKEY_LOCAL_MACHINE/System/CurrentControlSet/Services/Class/Display"
 , Ì ' † , Ì fGf " fgfŠ , ð ' S , Å [í [œ , µ , Å , , ¾ , ³ , † B

fVfXfef€ , ð [Ä < N " © , µ , Å A Total3DfffBfXfvf C E fCfhf % of Cfo , ð [Ä fCf " fXfg [[f < , µ , Å , , ¾ , ³ , † B

3D'Í%žDOSfQ[f€ ,Á, ì • s < i ¶

Q1.fQ[f€%œ-É,ÉADMA,ª-³CEø,É,É,Á,½,Æ,ç,xfbfZ[fW,ª,Á,éB,Ü,½,ÍfQ[f€ ,ì"®,«,ª,Ç,ª,à'x,Š´,¶,éB

**A1.Á%œ,ÉADOS,İŠÂ«•İ",ÁADMA,İXfe[f^fX,đf`fFbfN,µ,Ä,,¾,¾,çB
DOSfvf"fvfg,ÅSET,Æ"ü-Í,·,é,ÆŠÂ«•İ",İ^ê-—,ª·\
Ž!,¾,é,Ü,·B,»,'t,©,çASPEEDY3D_DMA,Æ,ç,ª·\Ž!,đ'T,µ,Ä,,¾,¾,çB,±,ì"Žš,ª 0 ,à,µ,,ÍOFF ,Æ·\
Ž!,¾,é,Ä,ç,½,çADMA,đ-³CEø,É,·,é,æ,ªY'è,¾,é,Ä,ç,Ü,·B,±,ì·İ",İADOS fvf"fvfg.Å
set speedy3d_dma=
,Æ"ü-Í,·,é,±,Æ,ÁY'è,Ä,«,Ü,·B,½,¾,¾,µA,Ž,ž,İfVfXfe€ ,ªfofXf}fXf^fŠf"fo,đfTf|
[fg,µ,Ä,ç,É,çê¶ADMA,İŽg,İ,Ü,¹,ñ,İ,Á'Ó,µ,Ä,,¾,¾,çB**

,±,é,É,æ,Á,ÄfQ[f€fXfs[fh,ª'¬,,È,Á,½ê¶ASPEEDY3D_DMA ,ª SET ,¾,é,Ä,ç
,éêŠiAUTOEXEC.BAT,à,µ,,ÍfQ[f€ŠÓEW,İfofbf`ftf@fCf<,ì'tj,đ'T,µ,ÄAset
speedy3d_dma=,İs,đ·İX,µ,Ä,,¾,¾,çB

,±,é,É,æ,Á,ÄfQ[f€,ªfNf%ofbfVf...µ,½,è"®,«,ª," ,©,µ,,È,Á,½,è,µ,½ê¶A,Ž,ž,İfVfXfe€
,ªfofXf}fXf^fŠf"fo,đfTf|[fg,µ,Ä,ç,É,ç%œ"¶«,ª,,È,è,Ü,·,İ,ÁAfVfXfe€,İ»'çŽÓ,É~A—
¶,µ,ÄBIOS,İfAfbfvfOfCE[fh,đŽó,¬,Ä,,¾,¾,çB

Q2.fQ[f€'t,É Error20 ,Æ,ç,xfbfZ[fW,ªo,é

**A3.Error20,Í Total3Df{[fh,à,µ,,Í DOS 3D,İfhf%ofCfo,İ%œŠú%œ»É-â'è,ª ,Á,½,±
,Æ,đŽ!,µ,Ü,·B,¾,ç,ÉSubfR[fh,ª·\Ž!,¾,é,½ê¶A •â'« ,Á,»,'İ"Ó¶t,đf`fFbfN,µ,Ä,Ý,Ä,-
,¾,¾,çBSubfR[fh,ª·\Ž!,¾,é,È,©,Á,½ê¶AfQ[f€f¶[fj[.İTf|[fg,É,¬-â.ç¶,í,¹,¾,¾,çB**

Q3.fQ[f€'t,ÉTotal3D,İGf%œ[,ª·\Ž!,¾,é,éB

A3.Appendix3,đf`fFbfN,µ,Ä,,¾,¾,çB

3D 'í%ž Windows 95 (Direct3D) fQ [f€, Á, ì•s<i] ‡

Q1. fQ [f€, ì"®, «, ¢, Ç, ¢, à'x, Š', ¶, é B

A1. Direct3D 'í%ž, }fQ [f€, ì', É, í Afñ [fhfE fF Af AfN fZ f% fCE [fV f† f", ð"Á, É•K—v, Æ, ·, é, à, ì, ¢, , è, Ü, ·
BfQ [f€, ìf} f† f... fAf<, ðŽQ [Æ, µ, Ä Afñ [fhfE fF Af AfN fZ f% fCE [fV f† f", ð—LCEø, É, µ, Ä, , ¾, ¾, † B

DOS (BIOS), ÅfTf|[]lfg,·,é%øð'œ"x,ÆŽü"g",ì^ê---

%øð'œ"x	□F□"	56	60	fŠftfœfbfVf...fœ[]fg	70	72	75	85	120
320x200	256		□					□	
	64K		□					□	
	16M		□					□	
320x240	256		□					□	
	64K		□					□	
	16M		□					□	
384x288	256						□		
	64K						□		
	16M						□		
400x300	256	□	□						□
	64K	□	□						□
	16M	□	□						□
512x384	256						□	□	□
	64K						□	□	□
	16M						□	□	□
640x400	256		□				□	□	□
	64K		□				□	□	□
	16M		□				□	□	□
640x480	256		□				□	□	□
	64K		□				□	□	□
	16M		□				□	□	□
768x576	256		□				□	□	
	64K		□				□	□	
	16M		□				□	□	
800x600	256	□	□			□	□	□	
	64K	□	□			□	□	□	
	16M	□	□			□	□	□	
1024x768	256		□	□			□	□	
	64K		□	□			□	□	
	16M		□	□			□	□	
1152x864	256		□				□	□	
	64K		□				□	□	
	16M		□				□	□	
1280x1024	256		□				□		
	64K		□				□		
	16M		□				□		

DOSf,[]fh,lfŠftfœfbfVf...fœ[]fg,ÍT3dutil.exeft[]fœBfŠfœB,ðŽg—p,μ,ÄÝ'è,Å,«,Ü,·□B
T3dutil.exeft[]fœBfŠfœB,Íg Total3D Drivers and Applications CD-
ROM[]h,ìToolsffBfœfNfgfŠ[][,É, ,è,Ü,·□B

Windows 95, ÅfTf|[][fg,·,é%øð'œ"x,ÆŽü"g[],ì^ê---

Windows95,Å,í640x480^È%ø,ì%øð'œ"x,íftf|[][fg,μ,Ü,¹,ñ[]B

		fŠftf[]fbfVf...f[][]fg							
%øð'œ"x	[]F[]"	56	60	70	72	75	85	100	120
640x480	256		☐		☐	☐	☐	☐	☐
	64K		☐		☐	☐	☐	☐	☐
	16M		☐		☐	☐	☐	☐	☐
800x600	256	☐	☐		☐	☐	☐	☐	
	64K	☐	☐		☐	☐	☐	☐	
	16M	☐	☐		☐	☐	☐	☐	
920x690	256		☐						
	64K		☐						
	16M		☐						
1024x768	256		☐	☐	☐	☐	☐	☐	
	64K		☐	☐	☐	☐	☐	☐	
	16M		☐	☐					
1152x864	256		☐	☐		☐	☐		
	64K		☐	☐		☐	☐		
	16M								
1280x1024	256		☐		☐	☐			
	64K		☐		☐	☐			
	16M								

fŠftf[]fbfVf...f[][]fg,ì·ì[]X

• â'«

Appendix 1: [fTf|\[\]fg,μ,Ä,ç,éfrfflf,\[\]fh," ,æ,ÑfŠftfœfbfVf...fœ\[\]fg](#)

[DOS \(BIOS\)](#)

[Windows 95](#)

[Windows 95 DirectX](#)

Appendix 2: ['î%ž,μ,Ä,ç,È,çfVfXfef€](#)

Appendix 3: [Error Codes](#)

Í%ž,μ,Ä,ç,È,çVfXfef€

Total3D ,ìS'ÿ" ,Å ,é Verité V1000fOf%oftfBfbfNf`fbfv,íA,Ù,Æ,ñ,Ç,lfVfXfef€,É'Í%ž,μ,Ä,ç
,Ü,·,ªA,Ü,ê,É'S« ,ì^« ,çVfXfef€,ª'¶Y,μ,Ü,·B,» ,ì,æ,æ,ÉfVfXfef€,íA%ãX,ì•û,Å"-
Œ©,μ,¾,ç ŠŽè,lf[[f][,Æ,à<|—í,μ,Ä'Í%ž,Å,« ,é,æ,æ,É"w—í'v,μ,Ä,·,è,Ü,·B,Ü,½A'Í%ž,Å,« ,È,ç
,±,Æ,ðSm"F,μ,½VfXfef€,É,Ä,ç,Ä,íA«Žž,"š,ì,ª,Å,« ,é,æ,æ,É'í^ ,³,¹,Ä,ç,½,¾,ç
,Ä,·,è,Ü,·,ªA,·C•t,« ,ì" _ ,ª,²,´ ,ç,Ü,μ,½,çA•¾ŽĐ,Ü,Å,²~A— ,¾,¾,çB

^È%º,É<" ,º,½VfXfef€Af`fbfvfZfbfgABIOS,íACE»Žž" _ ,Å Verité V1000 ,ðžg—p,·,é,Æ-â-è,ª<N,±
,è,â,·,ç,Æ,³,è,½,à,ì,Å,·B"®ì,ì'í,É,Ä,ç,Ä,í,ª ,è,Ü,·,ªAZQì,Ü,Å,É,²— ,¾,¾,çB

f[[f][Revision	~A—[[æ,È,Ç
Phoenix	4.03	http://www.firmware.com/sales/phoenixb.htm
Award	4.50	4.50 BIOS,í"Ží—P'¶Y,μ,Ü,·(G, PG,È,Ç) ,ªA,Ù,Æ,ñ,Ç,ì,à,ì,É,Ä,ç,Ä,í"®ì,ªSm"F,³,è,Ä,ç ,Ü,·B,μ,©,μAŠð,Ä,©,ì"A'è,ì}fU[f{[fh—p,ìBIOS,Å-â-è,ª"- Œ©,³,è,Ä,ç ,Ü,·B4.51,Ö,lfAfbfvfOfŒ[fh,ð,"š©,ß,μ,Ü,·ªA,» ,è,É,Ä,ç ,Ä,ìf}fU[f{[fh,ì»'çŽÒ,É,·-â,ç±,í,¹,¾,¾,çBìAward ,Å,í BIOS ,lfAfbfvfOfŒ[fh,í[s,ç,Ü,¹,ñ,ªAf}fU[f{[fh,ì»'çŽÒ,ì~A— [[æ,É,Ä,ç,Ä,ì<³,ì,Ä,,è,Ü,·Bj http://www.award.com/tech/upgrades0.htm

Error Codes

Total3D,É,ÍŽ©ĈÈĦf,đ□s,α,½,β,łTfuf<□[f`f",ªg,Ý□ž,Ü,ê,Ä,"è□AfGf%□[,ì□Ú,É□Ú,μ,¢□ó<μ,đfGf%□[fR□[fh,ìĈ` ,Å•\Ž|,·,é,±,Æ,ª,Ä,«,Ü,·□B

fGf%□[fR□[fh,ªŽ|,³,ê,½,Æ,«,í□AfR□[fh,ì"Ô□t,đ□T,!,Ä%□²,ì•\,đŽQ□Æ,μ,Ä,,¾,¾,³,¢□BfefNfjff<fTf|□[fg,Ö~A—□,·,é,æ,α,É,©,©,ê,Ä,¢,é□ê□‡,í□A<i"í"l,É□ó<μ□iŽg—pŠÄ<«□A%□Ý,μ,½fL□[,ì□‡"Ô"™□j,đ□T,!,½□ă,Ä,²~A—□,μ,Ä,¢,½,¾,¾,Æ□A,æ,èŠmŽÄ,ÈfTf|□[fg,đ□s,α,±,Æ,ª,Ä,«,Ü,·,ì,Ä□A,²<|—í,đ,"Šè,¢,¢,½,μ,Ü,·□B

Table 1: Error Code •

	fGf%□[fR□[fh %□đ□à / 'í□^•û-@
10	f`fFbfNfTf€fGf%□[fefNfjff<fTf □[fg,É~A—□,μ,Ä,,¾,¾,³,¢□B
20	f{□[fh%□Šú%□»fGf%□[•\,QfGf%□[SubfR□[fh•\,đŽQ□Æ,μ,Ä,,¾,¾,³,¢□B
30	f}fCfNf□fR□[fh,ìfo□[fWf‡f",ªfAfvfŠfP□[fVf‡f",Æ^ê'v,μ,Ü,¹,ñ□B□³,μ,¢f}fCfNf□fR□[fhftf@fCf<,ªfQ□[f€,ìfffBfCfNfgfŠ,©,à,μ,,íŠÄ<«•í□" SPEEDY3D = ,ÄŽw'è,³,ê,éfffBfCfNfgfŠ,É, ,é,±,Æ,đŠm" F,μ,Ä,,¾,¾,³,¢□BfefNfjff<fTf □[fg,É~A—□,μ,Ä,,¾,¾,³,¢□B
40	f□f,fŠ□[fAf□fP□[fVf‡f" fGf%□[Total3D,ìRAM,đf}fbfv,·,é,æ,α,Éf□f,fŠ□[,ì"z'u,ª,Ä,«,Ü,¹,ñ,Ä,μ,½□BfefNfjff<fTf □[fg,É~A—□,μ,Ä,,¾,¾,³,¢□B
50	Windows95—p,ìfhf%□fCfo"Totl3D.vxd",à,μ,,í"verite.vxd" ,ªĈ©,Ä,©,ç,È,©,Á,½,©ĈÄ,-,È,Á,Ä,¢,Ü,·□B Total3D Windows95 fhf%□fCfo,đ□ÄfCf"fXfg□[f<,·,é,©□ADOSf,□[fh,Á<N"® ,μ,Ä,,¾,¾,³,¢□B

Table 2: Error Subcode •

	SubfR□[fh %□đ□à / 'í□^•û-@
1	Windows95—p,ìfhf%□fCfo"Totl3D.vxd",à,μ,,í"verite.vxd" ,ªĈ©,Ä,©,ç,È,©,Á,½,©ĈÄ,-,È,Á,Ä,¢,Ü,· Total3D Windows95 fhf%□fCfo,đ□ÄfCf"fXfg□[f<,·,é,©□ADOSf,□[fh,Á<N"® ,μ,Ä,,¾,¾,³,¢□B
2	DOS,ìf□f,fŠfZfCfNf^ ,ª«,,è,È,¢,©□ADOS,ìf□f,fŠ,ìfŠf□[fX,ª«,,è,Ü,¹,ñ□B fQ□[f€f□□[f□[,ìfTf □[fg,É~A—□,μ,Ä,,¾,¾,³,¢□B
3	VPDfGf%□[Total3D f{□[fh,É-â'è,ª, ,é%□Ä"□<,ª, ,è,Ü,·□BfefNfjff<fTf □[fg,É~A—□,μ,Ä,,¾,¾,³,¢□B
4	frrfflf,□[fh•Ú"¶fGf%□[Total3D f{□[fh,É-â'è,ª, ,é%□Ä"□<,ª, ,è,Ü,·□BfefNfjff<fTf □[fg,É~A—□,μ,Ä,,¾,¾,³,¢□B
5	Vérité RISCfGf%□[Total3D f{□[fh,É-â'è,ª, ,é%□Ä"□<,ª, ,è,Ü,·□BfefNfjff<fTf □[fg,É~A—□,μ,Ä,,¾,¾,³,¢□B
6	f}fCfNf□fR□[fhf□□[fhfGf%□[□³,μ,¢f}fCfNf□fR□[fhftf@fCf<,ªfQ□[f€,ìfffBfCfNfgfŠ,©,à,μ,,íŠÄ<«•í□" SPEEDY3D =

- ,ÅŽw'è,³,è,éfffBfCEfNfgfŠ,É, ,é,±,Æ,ðŠm" F,μ,Ä,,³/₄,³,ç□BfefNfjfff<fTf|□[fg,É~A—
□,μ,Ä,,³/₄,³,ç□B
- 7 Vérité RISCfXf^□[fg^Ù□í
Total3D f{□[fh,É-â'è,^a, ,é%oÅ"□«,^a, ,è,Ü,·□BfefNfjfff<fTf|□[fg,É~A—□,μ,Ä,,³/₄,³,ç□B
- 8 f}fCfNf□fR□[fh,^a"¹/₂%ož,μ,Ä,ç,È,ç
Total3D f{□[fh,É-â'è,^a, ,é%oÅ"□«,^a, ,è,Ü,·□BfefNfjfff<fTf|□[fg,É~A—□,μ,Ä,,³/₄,³,ç□B
- 9 f}fCfNf□fR□[fh,ìfo□[fWf#f" ,^afAfvfŠfP□[fVf#f" ,Æ^è'v,μ,Ü,¹,ñ
□³,μ,çf}fCfNf□fR□[fhftf@fCf< ,^afQ□[f€,ìfffBfCEfNfgfŠ,©,à,μ,,í
ŠÅ<<•í□" SPEEDY3D =
,ÅŽw'è,³,è,éfffBfCEfNfgfŠ,É, ,é,±,Æ,ðŠm" F,μ,Ä,,³/₄,³,ç□BfefNfjfff<fTf|□[fg,É~A—
□,μ,Ä,,³/₄,³,ç□B
- 10 NULLf,□[fhfGf%o□[
Total3D f{□[fh,É-â'è,^a, ,é%oÅ"□«,^a, ,è,Ü,·□BfefNfjfff<fTf|□[fg,É~A—□,μ,Ä,,³/₄,³,ç□B
- 11 Vérité , ©,ç,ìff□[f^"Ç,ÝŽæ,è,^af^fCf€fAfEfg,³,è,Ü,μ,¹/₂
fAfvfŠfP□[fVf#f" ,ìfGf%o□[,©□A,à,μ,,ìfVfXfef€,ì□Y'è,Éf~fX,^a, ,è,Ü,·□B f\
ftfgfEjfFA,^a□³,μ,fCf" fXfg□[f<,³,è,Ä,ç,é,±,Æ,ðŠm" F,μ,Ä□AfpfRf" ,ð□Ä<N" ®,μ,Ä,-
,³/₄,³,ç□B

fncfXfLfff“3DfR□[fOf<,iŽg,č•û

fncfXfLfff“3DfS□[fOf<,iZfbfgfAfbfv

fncfXfLfff“3DfS□[fOf<,i,μ,,Ý

fncfXfLfff“3DfS□[fOf<,iŽg—p,É,,½,Á,Ä

fncfXfLfff“3DfS□[fOf<,iŠÇ—□

fgf%ofuf<fVf...□[fefBf“fO

fnfCfXfLfff“3DfS□[fOf<,lfZfbfgfAfbfv

fnfCfXfLfff“3DfS□[fOf<,lfCf“fXfg□[f<

1. 3DfS□[fOf<,lfP□[fuf<,δTotal3DfOf%oftfBfbfNfj□[fh,É,Â,ç,Ä,ç
,é□,çRfIfNf^□if,fjf^□[RfIfNf^,©,ç^ê”Ô—f,ê,½,Æ,±,ë,É, ,é'[Žq□j,É□Ú'±,μ,Ä,,¾,¾,ç□B

fppfRf“,ì“dCE¹,ð“ü,ê,½□ó'Ô,ÅfS□[fOf<,ð□Ú'±,,é,Æ□ALCD fVffffbf^□[,ªŠj,ç
,½,è•Ä,¶,½,è,μ,í,¶,β,Ü,·□BfppfRf“,ì“dCE¹,ª“ü,Ä,Ä,ç,é, ,ç,¾,í,,Ä,Æ,±,ì□ó'Ô,Ä,·□B,±,ì□ó'Ô,Ä-
â'è,í, ,è,Ü,¹,ñ,ª□A<C,É,É,é□ê□‡,lfQ□[f€,ð,μ,Ä,ç,É,ç,Æ,«,lfS□[fOf<,ðfppfRf“,©,ç,í,,μ,Ä,,¾,¾,ç□B

,Ü,½□AfQ□[f€,ðŠjŽn,,é,Æ,«□A□Å□%o,É,T-10•bŠÔ,Ü,ç,Ü,¾,ç—í—l,ªCE©,í,é,±,Æ,ª, ,è,Ü,·□B“dCE¹,
ð□Ø,Ä,½,Æ,«,ª3DfS□[fOf<,ð—{‘ì,©,ç,í,,μ,½,Æ,«,É,à“¯,¶,æ,æ,É,à,ì,ªCE©,í,Ü,·,ª□A—â'è,í, ,è,Ü,¹,ñ□
B

fQ□[f€,ðfvfCEfc,,é

fnfCfXfLfff“3DfS□[fOf<,É,æ,è□A3D,lfQ□[f€,ðŠy,μ,p,±,Æ,ª□o—^,Ü,,ª□A,±
,lfS□[fOf<,í“Á'è,lfQ□[f€□iLCD BIOSfo□[fWf#“1.21,É'î%ž,μ,½fQ□[f€□j,Ä,ì,YŽg—
p,Ä,«,Ü,·□BTotal3D,É,í□A'î%ž,,é□Q□[f€,ª2—{□iDescent#U□FDestination Quartzon , ,æ,Ñ
Whiplash□j•t'®,,μ,Ä,ç,Ü,·□B

fnfCfXfLfff“3DfS[fOf<,ì,μ,,Ý

fXfefCEfifXfR[fvfrfWf#f“,Æ3D

, È, ½, Žü, è, ðCE ©, Ä, ç, é, Æ, «AŽÀÜ, É, Í2-‡, ÌŠG, ð“ª, Ì†, Å1-‡, É‡‡-, μ, ÄCE ©, Ä, ç, Ü, ·B% E-
Ú, Æ‡‡-Ú, Í, » , ê, ¼, ê” ÷-, É^ á, Á, ½ŠG, ðCE ©, Ä‡A, » , ÌŠG, Í”], É’ -, ç, ê3ŽŸCE³, Ì-š’ì
%of’œ, É‡‡-, ³, ê, Ü, ·B

‡; Ü, Ä, ÌfrffifQ‡[f€, Ä, Í‡fXfNfŠ‡[f“, É^ ê, Ä, ÌŠG, μ, ©ŽÉ, μ‡o, ·, ±
, Æ, Í, Ä, «, Ü, ¹, ñ, Ä, μ, ½‡B, μ, ½, ², Ä, Ä‡A—š’ÌŠ´, ð‡o, ·, ½, ß, É¹¼, Ì, ç, è, ç, è, È•û-@, ², Æ, ç, è, Ä, «, Ü, μ, ½‡B
—á, Ì, Ì%“ , Ì, à, Ì, Ì‡-, ³, ‡fSf“fg, ð, Ú, ©, μ, Ä‡A<ß, Ì, à, Ì, ð, » , Ì‡ä, É‡d, È, Ä’â, «, ‡A, Í, Ä, «, è, ÆŽÉ, ·, ±
, Æ, É, æ, Ä, Ä%“ <ßŠ´, ð‡o, μ, ½, è, μ, Ä, ç, Ü, μ, ½‡B

, μ, ©, μ‡AfnfCfXfLfff“3DfS[fOf<, ðŽg—p, ·, é, ±, Æ, É, æ, Á, Ä‡A, æ, èŽ ©’R, É<ß, ç‡A” —Í, Ì, , é, RŽŸCE³
%of’œ, ð‡ì, è‡o, ·, ±, Æ, ², Ä, «, Ü, ·B

fnfCfXfLfff“,RDfS[fOf<,ì,μ,,Ý

, RDfS[fOf<, É’Ì%ž, μ, ½fQ‡[f€, Í‡A’S, Ä, Ì%œ-È, Ä‡A% E-Ú, Æ‡‡-Ú, Ì“ñ, Ä, ÌŽ<“_, ©, çCE ©, ½, Q-‡, Ì
%of’œ, ðCEðCEÝ, É%of, μ‡o, μ, Ü, ·B” ñ‡ì, É’ -, çfXfs‡[fh, ÅCEðCEÝ, É^Ú, ·, ½, ß‡A, » , Ì•Ì
%o», ðŠá, Ä, Æ, ç, Ì, é, ±, Æ, Í, Ä, «, Ü, ¹, ñ‡B

, RDfS[fOf<, É, Í—¼-Ú, Éfvffbf^‡[, ², Ä, ç, Ä, ç, Ä‡A
%oE, ©, ç, ÌŽ<“_, ÌŽž, Í‡‡, Ìfvffbf^‡[, ², ”, è‡A‡‡, ©, ç, ÌŽ<“_, ÌŽž, Ì%oE, Ìfvffbf^‡[, ², ”, è, é, æ, ², É, È, Ä, Ä, ç
, Ü, ·B, ±, Ì“ ®‡ì, ð, ·, Ì, â, ‡s, ², ±, Æ, É, æ, Ä, Ä‡AŽÀÜ, ÉfQ‡[f€, Ì†, É, ç, é, æ, ², ÈCEðCEi, ð-Ú, ÅCE ©, é, ±
, Æ, ²%Ä“\, É, È, é, Ì, Ä, ·B

fnfCfXfLfff“3DfS□[fOf<,iŽg—p,É, ,½,Á,Ä

fnfCfXfLfff“3DfS□[fOf<,i,žg—p,É, ,½,Á,Ä□A,č,.,Ä,©,lf|fCf“fg,ª, ,è,Ü,·□B

Žü•Ó,iŠÄ«

1. CEuCEö“•,ì□^%º,ÄŽg—p,μ,É,č,æ,π,É,μ,Ä,,¾,¾,č□B
2. -Ú,É,È,¶,p,æ,π,É□Af,fff^□[,ì-¾,é,¾,âfRf“fgf%ofXfg,ð’²□@,μ,Ä,-¾,¾,¾,č□B□if,fff^□[,ì’²□@,É,Ä,č,Ä,í□Af,fff^□[,lf}fff...fAf<,ðŽQ□AE,μ,Ä,,¾,¾,¾,č□B□j
3. ,É,é,x,fŠftfCEfbfVf...fCE□[fg,ðã,°,ÄŽg—p,μ,Ä,,¾,¾,¾,č□B

ftfŠfbfj□[□i%ºæ-Ê,ì,ç,Ä,«□j,ðCE, ,ç,·

3DfS□[fOf<,ðŽg—p,μ,½,Æ,«,É□A%ºæ-Ê,É,ç,Ä,«,ªCE©,ì,Ä□A-Ú,ì”æ~j,ð,ðŠ’,¶,é,±,Æ,ª, ,è,Ü,·□B, ».,ì,æ,π,É,±,Æ,ª<N,±,Ä,½□ê□#,í□A^È%ºº,ì□à-¾,ð“Ç,ñ,ÄŽwŽ!,É,μ,½,ª,Ä,Ä,,¾,¾,¾,č□B

ftfŠfbfj□[,ì<N,±,éCE’^ö

ftfŠfbfj□[,ì<N,±,é□Ä,à’â,«,ÉCE’^ö,í□ATotal3D,ì□,¼fŠftfCEfbfVf... fCE□[fg,ì□Y’è,É,æ,é,à,ì,Ä,·□B□,¼fŠftfCEfbfVf...fCE□[fg,Æ,í□A%ºæ-Ê,ª□ã %ºº•ûCEü,É□’,«Š,ì,ç,é,é’-,¾i/•b□j,ðŽw,μ,Ü,·□BfŠftfCEfbfVf...fCE□[fg,lf,fff^□[,É,æ,Ä,Ä•\ Ž!,Ä,«,é’l,ª^á,π,½,ß□AfOf%ºftfBfbfNf{□[fh,ì□%ºSú□Y’è,Ä,í□A,æ,è’½,,lf,fff^□[,É’í%ºž,Ä,«,é,æ,π ,É□AfŠftfCEfbfVf...fCE□[fg,í’á,ß,É□Y’è,¾,é,Ä,č,Ü,·□B

3DfS□[fOf<,ðŽg—p,¾,é,é□ê□#□A,±,lfŠftfCEfbfVf...fCE□[fg,ì^á,č ,ìŽü^í,iŠÄ«,Æ,àŠÖ~A,μ,Ä□ACE©,ì,©,½,É’â,«,%ºe<ç,μ,Ü,·□B,â,â”-^Ä,čŠÄ«,Ä,í□AfŠftfCEfbfVf... fCE□[fg,ª70Hz,Ä,à•□’É,í, ,Ü,è•%º’S,ÉŠ’,¶,é,±,Æ,í, ,è,Ü,¹,ñ,ª□A-¾,é,čCEð□iCEuCEö“•,ì□^ %ºº,É,Ç□j,ì,à,Æ,Ä,í70Hz,Ä,í%ºæ-Ê,ª,ç,Ä,č,Ä-Ú,É•%º’S,ðŠ’,¶,é□[,ª’□,ì,Ä,«,Ü,·□BfŠftfCEfbfVf... fCE□[fg,ª100Hz^È□ã,É,É,é,Æ□AftfŠfbfj□[,ì<N,±,ç, ,□A,Ü,Æ,ñ,Ç,ì□[,í•%º’S,ðŠ’,¶,é,±,Æ,í, ,è,Ü,¹,ñ□ B

’□: ,Ü,è,É□A’¼,ì□[,æ,è,à,ç,Ä,«,É’í,μ,Ä•qŠ’,È’ìž,ðŽ□,Ä,½□[,à,č,Ü,·□B,à,μ,²Ž©•ª,ª,»π ,Ä, ,é•û,í□A%ºº,ìžè□#,É,μ,½,ª,Ä,Ä%ºæ-Ê,ð□Ä“K%º»»,μ,Ä,-¾,¾,¾,č□B,μ,©,μ□ACE»Y,ì□ó’Ô,Ä,ç,Ä,«,ª<N,±,Ä,Ä,č,É,č□A, ,é,č,í•%º’S,ÉŠ ’,¶,ç,é,È,č□ê□#,í□Y’è,ð,».,ì,Ü,Ü,É,μ,Ä,, ,±,Æ,ð,“Š©,ß,μ,Ü,·□B

ftfŠfbfj□[,ðCE, ,ç,·,É,í

1. Žü,è,ì□A-¾□i’Á,ÉCEuCEö“•□j,ð□Á, ,æ,π,É,μ,Ä,,¾,¾,¾,č□B
2. fŠftfCEfbfVf...fCE□[fg,ð□,,ß,É□Y’è,μ,Ä,,¾,¾,¾,č□B DOSf,□[fh,lfŠftfCEfbfVf... fCE□[fg,íT3dutil.exeft□[fefBfŠfefB,ðŽg—p,μ,Ä□Y’è,Ä,«,Ü,·□B T3dutil.exeft□[fefBfŠfefB,í□gTotal3D Drivers and Applications CD-ROM□h,ìToolsfffBfCEfnfgfŠ□[,É, ,è,Ü,·□B.

f,fff^□[,ª’í%ºž,μ,Ä,č,é,È,čfŠftfCEfbfVf...fCE□[fg,ð100`120Hz,ì, ,ç,¾,Ä□Y’è,μ,Ä,-¾,¾,¾,č□B120Hz^È□ã,ì’l,É□Y’è,μ,Ä,à%ºæ-Ê,ìž,ª—ž,ç,é,¾, ,ÄftfŠfbfj□[,É,í%ºe<ç,μ,Ü,¹,ñ□B

’□^ÓŽ-□€:

f,fff^□[,ª’í%ºž,μ,Ä,č,é^È□ã,lfŠftfCEfbfVf...fCE□[fg,É□Y’è,·,é,Æ□ACEì□á,ìCE ’^ö,É,È,è,Ü,·□B□Y’è,ð□s,π’O,É□A•K, ,f,fff^□[,ìžd—l,ðŠm”F,μ,Ä,,¾,¾,¾,č□B

fnfCfXfLfff“3DfS[fOf<,iŠÇ—

fnfCfXfLfff“3DfS[fOf<,Šy,μ,Ý,ç,½,¾,,½,ß,É[AŽŸ,ì,±,Æ,đŽç,é,æ,κ,É,μ,Ä,,¾,¾,çB

Žg—pã,ì’^Ó

3DfS[fOf<,í, -š<@ŠB,Å,·,ì,Å[A—\,É^μ,í,È,ç,æ,κ,É,μ,Ä,,¾,¾,çB

fffof“,ì†,È,Ç,É,»,ì,Ü,Ü,ìó’Ô,Å“ü,ê,È,ç,æ,κ,É’^Ó,μ,Ä,,¾,¾,çB

%o^,Ô,Æ,«,É,Í[AŠÉÖPí•z,È,Çj,Å•ĩ,ñ,ÅŽ,ž%o^,Ô,æ,κ,É,μ,Ä,,¾,¾,çB

,Ù,±,è,âŽ¼<C,ì’½,ç,Æ,±,ë,É’u,©,È,ç,æ,κ,É,μ,Ä,,¾,¾,çB

ftfÆ[f€,đ<È,°,½,è%o,,î,μ,½,è,μ,È,ç,æ,κ,É,μ,Ä,,¾,¾,çB

fÇf“fY,É,ð,đ,Â,¯,½,è,μ,È,ç,æ,κ’^Ó,μ,Ä,,¾,¾,çB

fNfŠ[fjf“fo

fÇf“fY,đ,Ó,,Æ,«,É,Í[A—nÜ,È,Ç,ÍŽg—p,μ,È,ç,æ,κ,É,μ,Ä,,¾,¾,çB_ç,©,ç•z,đ,μ...
,Å,Ê,ç,μ,Ä[A,ä,Á,,è@,,æ,κ,É,μ,Ä,,¾,¾,çB

fgf%ofuf<fVf...[]fEfBf“fO

3DfS[]fOf<,lŽg—pŽž,É<N,±,è,â,·,çfgf%ofuf<,Æ,»,l%ođCE^—@,đ,ç,,Á,©,²[]Đ%oî,μ,Û,·:

Q1.3DfS[]fOf<,lfVfffbf^[]L,²[]Ø,è‘Ö,í,ç,È,ç

A1. ^È%oº,ì,±,Æ,đŠm,©,β,Ä,,¾,¾,ç[]F

3DfS[]fOf<—p,ìŠG,²%oæ—Ê,É•\Ž|,¾,è,Ä,ç,é[]B

Žg—p’t,lfQ[]f€,² LCD BIOS1.21,“,æ,Ñ VESA1.2frfflf,[]fh,É’í%ož,μ,Ä,ç,é[]B[]fQ[]f€
lfpfbfP[]fW,ì<L[]Ú,đŠm”F,μ,Ä,,¾,¾,ç[]F

Q2.%oæ—Ê,É,ç,Ä,«,²CE©,ì,é

A2. ^È%oº,ì‘€[]ì,đ,“,±,È,Ä,Ý,Ä,,¾,¾,ç[]F

%oÄ“\,ÈCEÀ,è[]A•”%o®,ì-¾,©,è,đ—Ž,Æ,μ,Ä,,¾,¾,ç[]iCEuCEđ“•,í“Á,É[]B

f,ffj^[]L,lfRf“fgf%ofXfg,đ[]ã,°,Ä,,¾,¾,ç[]B

f,ffj^[]L,ì-¾,é,³,đ%oº,°,Ä,,¾,¾,ç[]B

ŽQ[]Æ[]FftfŠfbfj[]L,đCE,,ç,,É,Í .

Q3.%ođ‘œ“x,²[]ã,°,ç,è,È,ç[]B

A3. ^È%oº,ì,±,Æ,đŠm,©,β,Ä,,¾,¾,ç[]F

f,ffj^[]L,²[],,ç%ođ‘œ“x,đfTfj[][]fg,μ,Ä,ç,é[]B

fQ[]f€,²[],,ç%ođ‘œ“x,đfTfj[][]fg,μ,Ä,ç,é[]B

Q4.3DfS[]fOf<,lfVfffbf^[]L,ì“®,«,²,¬,±,ç,È,ç

A4.,±,è,íCPU,²fQ[]f€^ÈŠO,ì^—[]ÉŽžŠÔ,đžæ,ç,è,Ä,ç,é[]ê[]ž,É”[]¶,μ,Û,·[]B“Á,ÉWindows95,ìMS-
DOSf{fbfNfX,ÅfQ[]f€,đ,μ,Ä,ç,é,Æ,«,É[]A,±,ìCE»[]Ú,²,æ,<N,è,Û,·[]B
±,ì[]ê[]ž,íWindows95,đ[]—¹,μ,Ä[]ADOS,©,çfQ[]f€,đfvfCEfC,μ,Ä,Ý,Ä,,¾,¾,ç[]B

’[]: 3DfS[]fOf<,đžg—p,·,éQ[]f€,íDOSf,[]fh,Å[]Å“K,ì“®[]ì,đ[]s,æ,æ,É[]Ý’è,³,è,Ä,ç,Û,·[]B

Q5.MS-DOSf,[]fh,É[]Ø,è‘Ö,ì,½,Æ,«,ÉCD-ROM,ÉfAfNfZfX,Ä,«,È,ç

A5.Windows95,Åžg—p,·,éCD-ROMfhf%ofCfo,ÆMS-DOSf,[]fh,Åžg—p,·,éCD-ROMfhf
%ofCfo,í•É,ì,à,ì,È,ì,Å[]AMS-DOSf,[]fh,Åžg—p,·,éCD-ROMfhf%ofCfo,đfCf“fXfg[]f<,·,é•K—
v,²,è,Û,·[]BfCf“fXfg[]f<,ì•û—@,É,Ä,ç,Ä,í[]AWindows95CD,ìMS-DOSfwf<fvftf@fCf<,đ^È

%o°ižè☐‡,ÅŽQ☐Æ,μ,Ä,,¾,¾,☐☐F

1 Windows 95,ð<N“® ,μWindows 95 CD,ðfZfbfg,μ,Ü,·☐B

2 ☐gCD,ižQ☐Æ☐h,ðfNfŠfbfN,μ,Ü,·☐B

3 ☐gOther☐hftfHf<f_,ðf_fuf<fNfŠfbfN,μ,Ü,·☐B

4 ☐gOldmsdos☐hftfHf<f_,ðf_fuf<fNfŠfbfN,μ,Ü,·☐B

5 HELP.com,ðf_fuf<fNfŠfbfN,μ,Ä,,¾,¾,☐☐B

6 fwf<fvftf@fCf<,ªŠj,«,Ü,·☐B

3D Stereo Sound, **İŽg,ç•û**

3D Stereo Sound,İfZfbfgfAfbfv

Audio Controlft[]fefBfŠfefB,İŽg,ç•û

fgf%∞fuf<fVf...[]fefB“fO

3D Stereo Sound, **İfZfbfgfAfbfv**

Total3D,É,İSpatializer® ,İ 3DfXfefCEflTf%ofEf“fh-f|fXfgfvf|fZfbfT,ª“ <□Ú,³,ê,Ä,ç,Ü,·□B ,±,ê,É,æ,è□A,“Ž□,ç,İfTfEf“fhf{□[fh,İ%º¹,ð”——Í,İ, ,é3ŽYCE³fXfefCEflTfEf“fh,É•İŠ·,·,é,±,Æ,ª,Å,«,Ü,·□B

,“Ž□,ç,İfTfEf“fhf{□[fh,ÆfXfs□[fj□[,ðTotal3D,É□Ú‘±,·,é,É,Í:

1. Total3D •t’® ,İfXfs□[fj□Ú‘±fR□[fh,ð—p^Ó,μ,Ü,·□B
2. fTfEf“fhf{□[fh,İ□gLine Out□h’[Žq,ÉfR□[fh,ð□Ú‘±,μ,Ü,·□B (ŠÔ^á,Á,Ä□gSpeaker Out□h’[Žq,É□Ú‘±,μ,È,ç,æ,ª,É’□^Ó,μ,Ä,,³/₄,³,ç□B)
3. ,» ,İfR□[fh,İ”½’Í”¼,ðTotal3Df{□[fh,İ□gLine In□h’[Žq,É□Ú‘±,μ,Ü,·□B
4. Total3Df{□[fh,İ□gLine Out□h’[Žq,ðfXfs□[fj□[,Æ□Ú‘±,μ,Ü,·□B

’□□FTotal3DfTfEf“fh,ðŽg—p,·,é,É,Í□A“Æ—š“dCE¹,ðŽ□,Á,½fXfs□[fj□[,ª•K—v,Ä,·□B

□Ú‘±,ª□I—¹,μ,½,çAudio Control ft□[fefBfŠfefB,ð<N“® ,μ,Ä,,³/₄,³,ç□B

ŽQ□Æ□F **Audio Controlft□[fefBfŠfefB,İŽg,ç•ú**

Audio Control

How to use the Audio Control icon

1. Right-click the Audio Control icon in the system tray.
2. **Audio Control...**
3. Audio Control



How to use the Audio Control icon

Right-click the Audio Control icon in the system tray. **Audio Control...**

Audio Control

3D Sound Mode
Mode: Stereo Source Mono Source Disable
Level: High Medium Low
OK Cancel(C)

fgf%ofuf<fVf... [fefBf“fo

Total 3DfTfEf“fh, ðŽg—pŽž, É<N, ±, è, â, ·, çfgf%ofuf<, Æ, »; ð%ðCE^ -@, ð, ç, , Â, ©, ²Ð%ôî, µ, Ü, ·:

Q1.%o¹,ª••, ±, ¡, È, ç, © [A, à, µ, , Í [¬, ³, ·, ¬, é

A1.

fXfs [[fj] [,ª“Æ—§“dCE¹, ðŽ [, Á, Ä, ç, é, ©, Ç, æ, ©Šm“F, µ, Ä, , ¾, ¾, ç [B

fRf“fgf [[f<fpf] f<, ð [gf} f<f` f [fffBfA [h, Å%o¹—Ê, ðÝ’è, ðŠm“F, µ, Ä, , ¾, ¾, ç [B

Q1.%o¹Žž,ª^« , ç

A1.

fTfEf“fhfj [[fh, ð [gLine Out [h [i [gSpeaker Out, Å, Í, È, [j, ÉTotal3D,ª [Ú’±, ¾, è, Ä, ç, é, ±, Æ, ðŠm, ©, ß, Ä, , ¾, ¾, ç [B

Audio Controlft [[fefBfŠfefB, ðfCEfxf<, ð%oº, °, Ä, Ý, Ä, , ¾, ¾, ç [B

ŽQ [Æ [F [Audio Controlft \[\[fefBfŠfefB, ðŽg, ç •û](#)

Refresh Utility



Refresh Utility, É, Â, ç, Ä

Total3D Refresh Utility (Direct Draw) のリフレッシュレート設定...

1. f^fXfNfo [Total3D Refresh Utility] のリフレッシュレート設定...
2. f^fj... [Refresh Utility] のリフレッシュレート設定...
3. Total3D Refresh Utility (Direct Draw) のリフレッシュレート設定...
4. Še%ø'd'œ"x,Æ[F], Refresh Utility (Direct Draw) のリフレッシュレート設定...
5. •iX,μ,½ Refresh Utility (Direct Draw) のリフレッシュレート設定...
6. Y'è,μ,½ Refresh Utility (Direct Draw) のリフレッシュレート設定...
7. f}fEX,ðfNfSfbfN,·,é,©%½,©fL[ð%Ÿ,μ,Ä,¾,ç,çB
8. Šm" F,lf_cfAfjOf{fbfNfX,¾\Z!,³,è,Ü,·B³,μ,fefXfg%øæ-Ê,¾\Z!,³,è,½,ç,Í,ç,ðfNfSfbfN,μ,Ä,¾,ç,çBfSftfCEfbfVf...fCE[fg,ìŸ'è,¾X[V,³,è,Ü,·B³,μ,¾\Z!,³,è,È,çê#A,ç,ç,ì,ð'l'ð,μ,Ä,¾,ç,çBCE³,lfSftfCEfbfVf...fCE[fg,ìŸ'è,È-ß,μ,Ü,·B

